

# CAM LOCK

## Special Features

- 90° Rotary Cam movement.
- Click action mechanism.
- Available in standard and threaded mounting models.
- Click action mechanism.
- Key removable in locked and unlocked position.

## Specifications

Item	Code Nos.	Finish
Cam Lock - Standard	E-MCL1-22	Nickel Plated
Cam Lock - Threaded 16mm	E-MCL2-16	
Cam Lock - Threaded 25mm	E-MCL2-25	
Cam Lock - Threaded 30mm	E-MCL2-30	



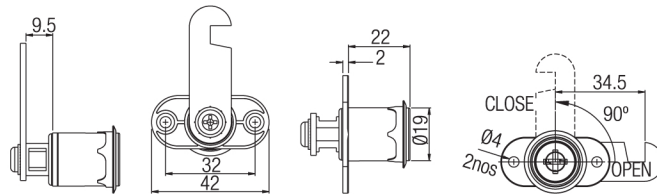
Standard



Threaded



### Standard



### Threaded

