

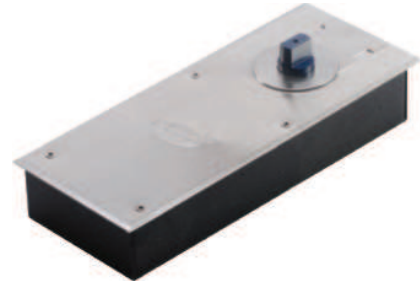


# FLOOR SPRING - 90



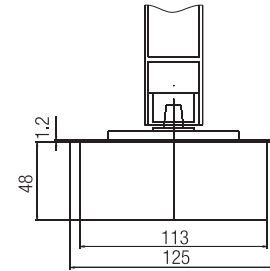
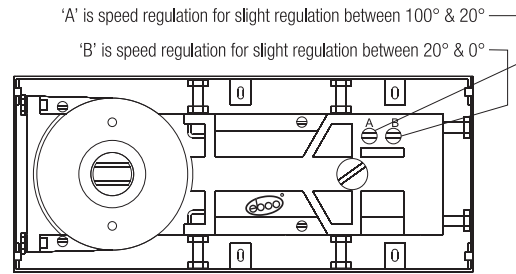
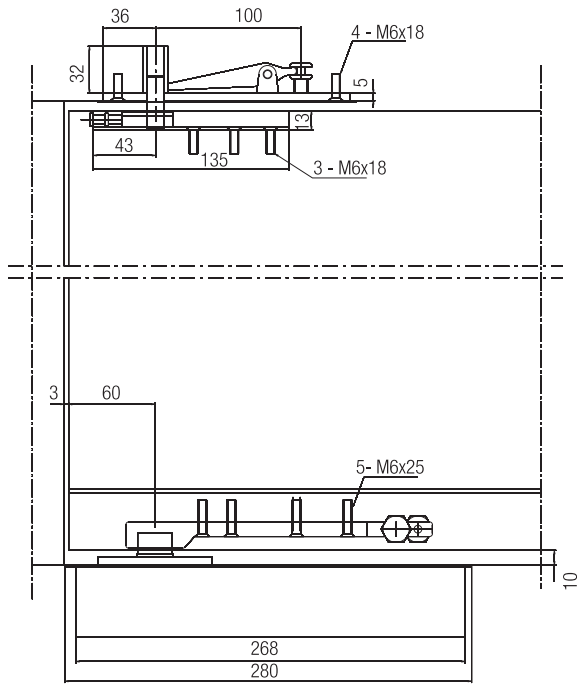
## Special Features

- 5,00,000 cycles tested
- Max. open angle 116°
- Hold open angle 90°
- Door width 1000mm
- Max. door weight : 90 Kgs.

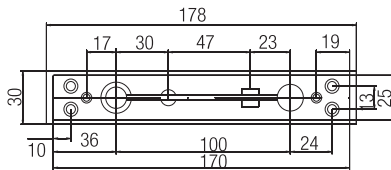


## Specifications

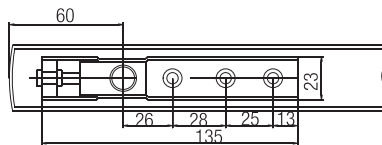
| Item Code | Max. Door Width (mm) | Max Door Weight (kgs) | Finish |
|-----------|----------------------|-----------------------|--------|
| DFS - 90  | 1000                 | 90                    | BS     |



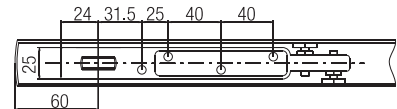
Top of Door Frame



Top of Door Leaf



Foot of Door Leaf



Bottom Pivot



DPF4-01  
To be used directly on the floor without floor spring.

Top Pivot



DPF4-02  
Top receiver pivot for wooden or ceiling installation.

Floor Spring door accessories DFS-A1

