



DOOR CLOSER - DC 301



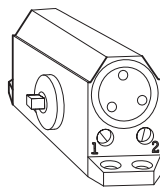
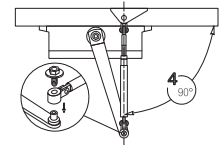
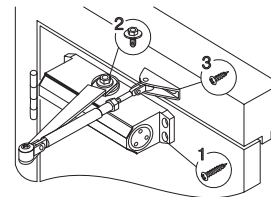
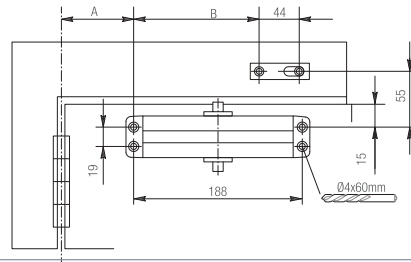
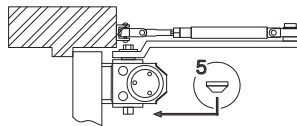
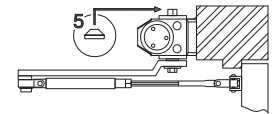
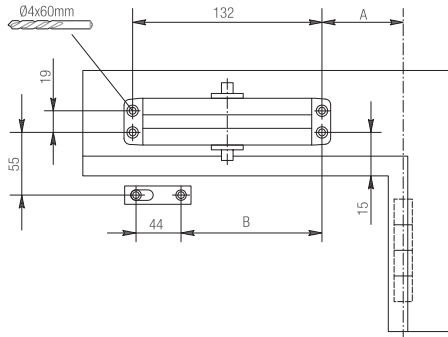
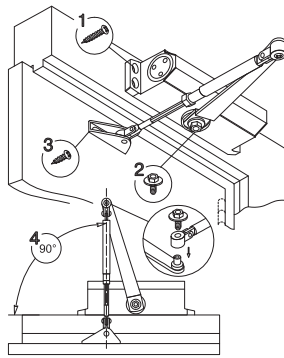
Special Features

- Hold open facility.
- Hold open angle 90° to 160°.
- Latching and Closing speed adjust valve.
- Right hand and left hand opening door.
- Door width 900-1200mm.
- Door weight 105kgs.
- Door opening angle of 180° max.
- 1,00,000 cycles tested.



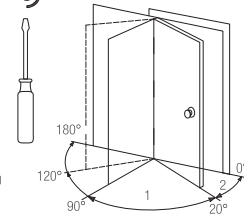
Specifications

Item Code No.	Body Size in mm			Hold Open Facility	Latching and Closing Speed Adjust Valve	Technical Parameter	
	L	W	H			Door Width	Door Weight
DC 301	206	45	67	Yes	Available	900 - 1200mm	105kgs



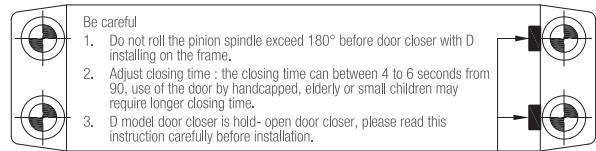
1 - control 180-20 closing speed
2 - control 20-0 latching speed

- Close the door slowly
- Close the door faster



Warning users:

1. Do not turn speed regulating valve exceed the maximum turns, avoid oil leakage, it can lead to run instability.
2. Let the door closer close by itself, please do not add external forces, or it may damage the door closer.
3. Please read this instruction carefully before installation, we won't be responsible for any results which are caused by the wrong mounting ways.



Speed regulating valves toward hinge.